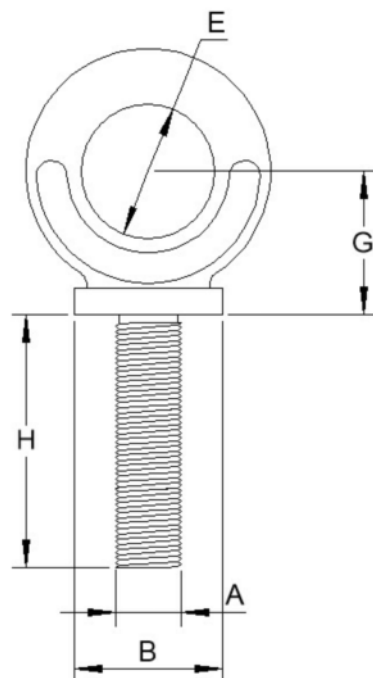


# Long Shank Dynamo Eyebolt



Size A	Code	Weight (g)	B	E	H	G	SWL(kg)
M8	5120-8	100	17	22	102	27	150
M10	5120-10	120	17	22	102	27	250
M12	5120-12	300	26	22	102	27	320
M16	5120-16	360	32	29	114	34	630
M20	5120-20	1200	40	40	127	47	1250
M24	5120-24	1400	52	51	127	60	2000

Notes : Dimensions are a guide and may vary slightly. Pls check with us for dimension critical applications.  
 If Break (BL), Safe working load (SWL) or Working load limit (WLL) are shown:  
 This is a guide only. (Do not use for lifting unless it is a certified lifting product)

## LONG SHANK DYNAMO EYEBOLT

Can be used for vertical lifting but not horizontal lifting. Has a large eye making it a more convenient attachment point.

<b>MATERIAL</b>	<b>SELF COLOUR</b>
MATERIAL TYPE	SELF COLOUR