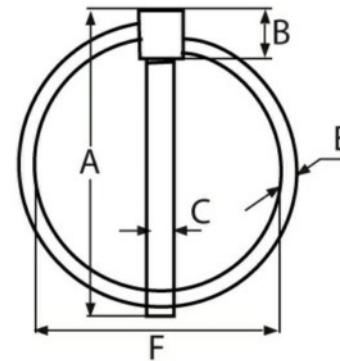


# Linch Pin

**BUY  
ONLINE**



**Available in :**

● A4 Stainless

All have ETA approval  
All have ICC approval

Stock code	C	A	B	E	F	Box
5345-44	4.4	49.6	7.5	2.4	39	10
5345-60	6	56.2	8	3.2	44.8	10
5345-74	7.4	56.5	8.4	3.1	44.9	5
5345-106	10.6	56.5	10.7	3.2	43.4	5

## Notes about load limits where shown

**SWL or WLL = Safe working load limit (kg) :** This is the maximum weight the product should carry.

**BL = Break load :** This is the maximum weight to break for the product and will vary from batch to batch. You should only use the product at the WLL or 1/4 the break load.

The above are guides for sizing of products and not a recommendation.

Do not use any product for lifting unless drawing is marked suitable for lifting - with this symbol



**STEEL  
GEAR**  
Stainless steel fasteners & fittings

NB. This drawing and its dimensions to be used as a guide. For dimension critical applications please ask

**STEELGEAR.CO.UK**  
**UNIT 9 THESIGER CLOSE**  
**WORTHING**  
**BN11 2RN**

**www.steelgear.co.uk**  
**info@steelgear.co.uk**

Steelgear is a trading name of DARAC LTD

Title:

**Linch Pin**

Dimensions in mm

SIZE

**A4**

DWG NO.  
PART NO.

See CODE in above table

REV

**1**