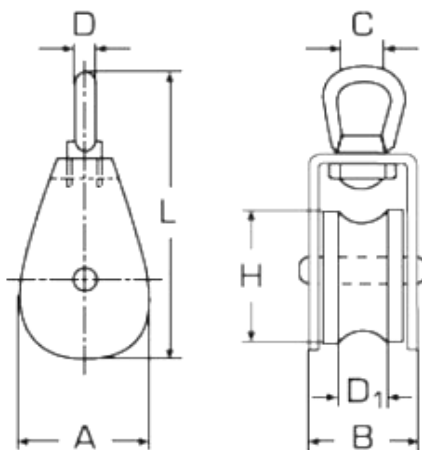


## Pulley - Single block



Code	Reel	Groove	A(mm)	B	C	D	L
SKU93410	25	12	30	24	14	6	83
SKU9341	32	12	36	24	14	6	96
SKU93410	50	15	54	28	20	8	130

Notes : Dimensions are a guide and may vary slightly. Pls check with us for dimension critical applications.

If Break (BL), Safe working load (SWL) or Working load limit (WLL) are shown:  
This is a guide only. (Do not use for lifting unless it is a certified lifting product)

### Pulley - single block

Use where corrosion resistance is important.

Where more mechanical advantage is required, see The double block pulley

<b>MATERIAL TYPE</b>	<b>A4 STAINLESS</b>
<b>FINISH</b>	<b>POLISHED</b>

### ADVANTAGES

- High corrosion resistance
- Highly durable
- Can be used in water