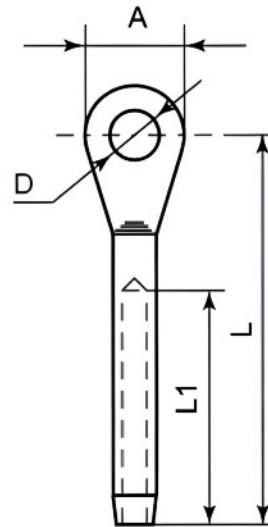


EYE TERMINAL



WIRE SIZE (mm)	CODE	WEIGHT (g)	A	Ø	L1	L	BREAK (Kg)
2	SKU2560	8	13	6	30	44.5	800
3	SKU2600	13	13	6.5	36	57.5	1300
4	SKU2640	25	18	8	39	65	2600
5	SKU2680	42	22	10	50	80	3500
6	SKU2720	97	28	12.5	62	94	5600
8	SKU2730	160	32	14.5	85	124	8000
10	SKU2740	200	36	16.4	90	142	13000
12	SKU2750	400	39	19.3	105	159	13000

Notes : Dimensions are a guide and may vary slightly. Pls check with us for dimension critical applications.
 If Break (BL), Safe working load (SWL) or Working load limit (WLL) are shown:
 This is a guide only. (Do not use for lifting unless it is a certified lifting product)

EYE TERMINAL

Terminals are used at the ends of lengths of wire as connectors or end stops. Eye Terminals have a small, but strong connection point with a hole that allows clevis pins to connect the wire to shackles, deck plates and rigging screws. The finish is stronger and neater than using wire rope clips and grips or pressed ferrules.

MATERIAL TYPE	A4 STAINLESS
FINISH	POLISHED

ADVANTAGES

- Strong & durable
- Can be used for various applications
- A4 Stainless steel