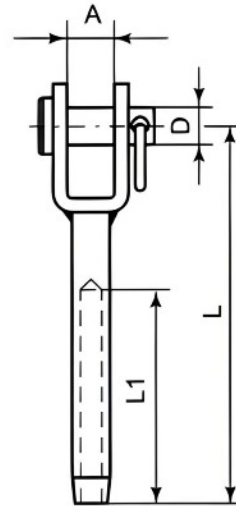


# MINI SWAGE FORK TERMINAL



SIZE mm (WIRE)	CODE	WEIGHT (g)	A	D	L1	L
3	SKU2948	25	8	5	25	58
4	SKU2950	30	8	6	35	68
5	SKU2952	45	10	8	40	74
6	SKU2954	102	12	10	50	90

Notes : Dimensions are a guide and may vary slightly. Pls check with us for dimension critical applications.  
 If Break (BL), Safe working load (SWL) or Working load limit (WLL) are shown:  
 This is a guide only. (Do not use for lifting unless it is a certified lifting product)

## MINI SWAGE FORK TERMINAL

Terminals are used at the ends of lengths of wire as connectors or end stops. Mini Fork Terminals have a jaw opening with clevis pin, that allows the wire to be attached to stationery points such as eye plates, eyebolts and lacing eyes, just like the standard type. They are for use architecturally, rather than load bearing. The process used to join the wire and fork terminal is hydraulic swaging or pressing.

MATERIAL TYPE	A4 STAINLESS
FINISH	POLISHED

## ADVANTAGES

- Strong & durable
- Corrosion resistant
- A4 Stainless steel