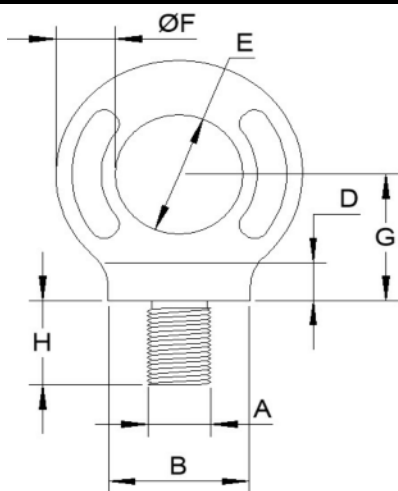


Collared Eyebolt



Size A	Code	Weight (kg)	B	D	E	F	G	H	SWL Tonne
M6	5060-6	0.07	22	7	15	9	20	18	0.1
M8	5060-8	0.07	22	7	15	9	20	18	0.15
M10	5060-10	0.07	22	7	15	9	20	18	0.33
M12	5060-12	0.07	22	7	15	9	20	18	0.4
M16	5060-16	0.16	29	10	20	12	26	23	0.8
M18	5060-18	0.28	36	12	24	14	32	28	1
M20	5060-20	0.44	40	14	27	16	36	32	1.6
M22	5060-22	0.56	45	15	30	18	40	35	1.6
M24	5060-24	0.84	52	17	35	21	46	40	2.5
M30	5060-30	1.66	65	22	44	26	58	51	4
M33	5060-32	2.24	72	24	48	28	64	56	5
M36	5060-33	3.17	81	27	54	32	72	63	6.3
M39	5060-39	3.92	90	30	60	36	80	70	6.3
M42	5060-42	6	101	34	68	40	90	79	8
M45	5060-45	6	101	34	68	40	90	79	8

Notes : Dimensions are a guide and may vary slightly. Pls check with us for dimension critical applications.
 If Break (BL), Safe working load (SWL) or Working load limit (WLL) are shown:
 This is a guide only. (Do not use for lifting unless it is a certified lifting product)

COLLARED EYEBOLT

Typically the eyebolt is screwed into the side of the load rather than the top. The eye must be aligned with the line of pull.

MATERIAL	SELF COLOUR
MATERIAL TYPE	SELF COLOUR