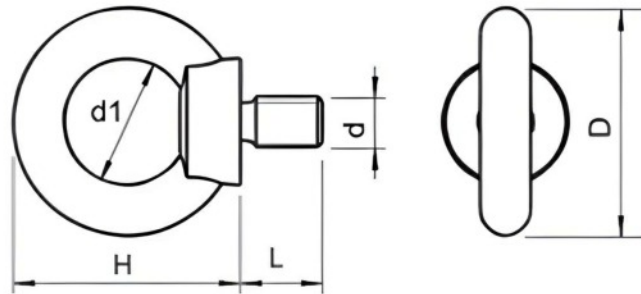


DIN580-BZP



Size d mm	Code A2 or A4 (A4 Shown)	Code BZP	Weight (g)	D	d1	H	L	SWL / Kg
M6	900-6-CE-A4	900-6-CE-BZP	50	27	16	31	11	70
M8	900-8-CE-A4	900-8-CE-BZP	60	36	20	36	13	140
M10	900-10-CE-A4	900-10-CE-BZP	105	45	25	45	17	230
M12	900-12-CE-A4	900-12-CE-BZP	180	54	30	53	20.5	340
M16	900-16-CE-A4	900-16-CE-BZP	300	63	35	62	27	700
M20	900-20-CE-A4	900-20-CE-BZP	440	72	40	71	30	1200
M24	900-24-CE-A4	900-24-CE-BZP	870	90	50	90	36	1800
M30	N/A	900-30-CE-BZP	1650	108	60	110	45	3600
M36	N/A	900-36-CE-BZP	2650	126	70	127	54	5100
M42	N/A	900-42-CE-BZP	4000	144	80	144	63	7000
M48	N/A	900-48-CE-BZP	6400	166	90	176	68	8600

Notes : Dimensions are a guide and may vary slightly. Pls check with us for dimension critical applications.
 If Break (BL), Safe working load (SWL) or Working load limit (WLL) are shown:
 This is a guide only. (Do not use for lifting unless it is a certified lifting product)

DIN580-BZP

Load-rated forged BZP (Bright Zinc Plated) steel eyebolts are robust and durable lifting accessories known for their strength and reliability in heavy-duty applications. These eyebolts are forged from high-quality steel and undergo a zinc plating process to enhance corrosion resistance, making them suitable for both indoor and outdoor use in various environments. They are very cost effective due to the higher lifting capacity of the larger variants, that are not available in the stainless steel alternatives. For example M24 is the largest stainless CE Certified eyebolt. These eyebolts are forged and certified for lifting. They are supplied with a certificate.

MATERIAL TYPE	STEEL
FINISH	BZP

ADVANTAGES

- Can be used for lifting
- Some corrosion protection. (not as high as A2 stainless)