



STEEL GEAR

Load Rated Eyebolt to DIN580 - forged



DATASHEET

**STEELGEAR.CO.UK
UNIT 9 THESIGER CLOSE
WORTHING
BN11 2RN**

**www.steelgear.co.uk
info@steelgear.co.uk**

SPECIFICATION :



LOAD RATED EYEBOLT TO DIN 580

This type of eyebolt is forged and has load limit and CE markings embossed onto it.

It has a working load limit allocated to it and comes with a certificate.

It is excellent for use in applications where a load limit is required for the product

MATERIAL	STAINLESS
MATERIAL TYPE	A2 & A4 STAINLESS, BZP
FINISH	POLISHED
NOTES	N/A

ADVANTAGES

- High corrosion resistance in stainless types
- Minor corrosion resistance in BZP types
- Used for vertical lifting
- Load rated and forged for high strength

EC DECLARATION OF CONFORMITY
THIS IS A TRUE AND ACCURATE COPY OF THE MANUFACTURER'S ORIGINAL CERTIFICATE WHICH IS KEPT ON FILE AT DARAC LTD

DARAC
DARAC LTD UNIT 9, THESIGER CLOSE, WORTHING, BN11 2RN
01903 331391 www.darac.com www.steelgear.co.uk

Certificate No. : CC 6237
Issue Date : 19/07/2019

STEEL GEAR

To: TEST COMPANY
A STREET 1
A STREET 2
A TOWN
A COUNTY
POST CODE

Order Date: 16/07/2019
Cust. Ord. No.:
Account Ref.: 1001

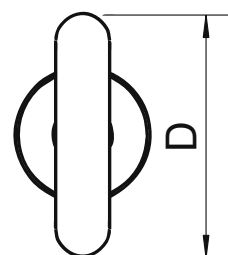
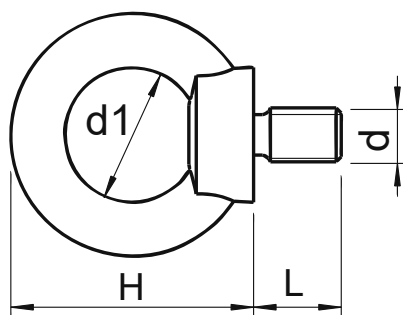
Qty	Product Code	Product Description	Material	(If applicable) Markings	WLL
20	SKU0930	Deer Shackle - LOAD RATED - 1 Tonne	A4 Stainless	8342	WLL 1T

I hereby declare that the equipment described in this record was, to the best of my knowledge, tested and/or examined, was found free of any defect likely to affect safety and with CE marking complies with the essential Health and safety requirements of the supply of machinery (safety) regulations 2008.

The data contained in this report will assist with the information of Lifting operations & Lifting equipment regulations 1998 (L.O.L.E.R). The items detailed have been designed and produced to be suitable for normal duties when correctly used by a competent person. Where an item is to be used in abnormal conditions or for arduous duties reference should be made to the manufacturer before such use. Failure to do so may absolve the manufacturer from his responsibility under section 6 of the Health & safety of Work act 1974.

For and on behalf of
Darac Ltd
S. C. [Signature]
Director

DIMENSIONS (mm)



Size <i>d</i> mm	Code A2 or A4 (A4 Shown)	Code BZP	Weight (g)	<i>D</i>	<i>d1</i>	<i>H</i>	<i>L</i>	SWL (kg)
M6	900-6-CE-A4	900-6-CE-BZP	50	27	16	31	11	70
M8	900-8-CE-A4	900-8-CE-BZP	60	36	20	36	13	140
M10	900-10-CE-A4	900-10-CE-BZP	105	45	25	45	17	230
M12	900-12-CE-A4	900-12-CE-BZP	180	54	30	53	20.5	340
M16	900-16-CE-A4	900-16-CE-BZP	300	63	35	62	27	700
M20	900-20-CE-A4	900-20-CE-BZP	440	72	40	71	30	1200
M24	900-24-CE-A4	900-24-CE-BZP	870	90	50	90	36	1800
M30	N/A	900-30-CE-BZP	1650	108	60	110	45	3600
M36	N/A	900-36-CE-BZP	2650	126	70	127	54	5100
M42	N/A	900-42-CE-BZP	4000	144	80	144	63	7000
M48	N/A	900-48-CE-BZP	6400	166	90	176	68	8600

SWL or WLL = Safe working load limit: This is the maximum weight the product should carry.