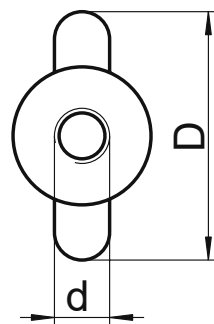
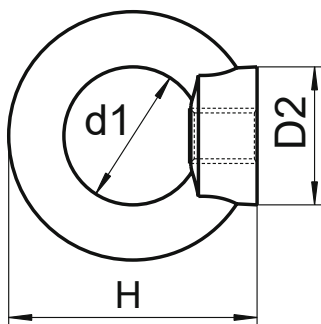


## LOAD RATED LIFTING EYENUTS - Forged to DIN582



Example image for M16



Size d	Code A2 - A4 (A4 Shown)	Code (BZP)	Weight (g) (Approx.)	D	d1	H	D2	SWL (Kg)
M6	902-6-CE-A4	902-6-CE-BZP	50	27	16	31	20	70
M8	902-8-CE-A4	902-8-CE-BZP	60	36	20	36	20	140
M10	902-10-CE-A4	902-10-CE-BZP	105	45	25	45	25	230
M12	902-12-CE-A4	902-12-CE-BZP	180	54	30	53	30	340
M16	902-16-CE-A4	902-16-CE-BZP	300	63	35	62	35	700
M20	902-20-CE-A4	902-20-CE-BZP	440	72	40	71	40	1200
M24	902-24-CE-A4	902-24-CE-BZP	870	90	50	90	50	1800
M30	N/A	902-30-CE-BZP	1650	108	60	110		3600
M36	N/A	902-36-CE-BZP	2650	126	70	127		5100
M42	N/A	902-42-CE-BZP	4000	144	80	144		7000
M48	N/A	902-48-CE-BZP	6400	166	90	176		8600

Where Break, SWL or WLL are shown. This is a Safe working load and the product should not be used to lift items heavier than this limit. Respect the guidance notes supplied with the product.

### Lifting eyenuts

These are dropforged and marked with the correct 4 marking required to issue a CE certificate.

That is : Size, Material, WLL, CE mark with batch code

### ADVANTAGES

- Certificated to CE requirements
- Many sizes and materials available

### Material notes :

- **A4 Stainless**  
Also known as marine grade (316)
- **A2 Stainless**  
Also known as 304 stainless
- **BZP**  
Bright zinc plated or electrogalvanised