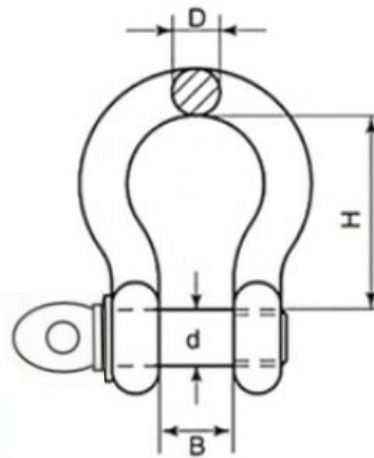


GALVANISED LARGE BOW SHACKLE



Code	SWL	D	d	H	B
40-045-G	0.45T	3/8"	1/2"	41	16
40-075-G	0.75T	1/2"	5/8"	54	22
40-125-G	1.25T	5/8"	3/4"	70	29
40-200-G	2.00T	3/4"	7/8"	86	35
40-275-G	2.75T	7/8"	1"	98	41
40-375-G	3.75T	1"	1.1/8"	108	44
40-475-G	4.75T	1.1/8"	1.1/4"	124	50
40-575-G	5.75T	1.1/4"	1.3/8"	137	57
40-725-G	7.25T	1.3/8"	1.1/2"	152	64

Notes : Dimensions are a guide and may vary slightly. Pls check with us for dimension critical applications.
 If Break (BL), Safe working load (SWL) or Working load limit (WLL) are shown:
 This is a guide only. (Do not use for lifting unless it is a certified lifting product)

GALVANISED LARGE BOW SHACKLE

Galvanized Bow shackle made to B.S 3032. Every shackle has a safe working load limit embossed onto the shackle. It has a screw pin lock which is common with many types of shackles. This type of shackle can be used for Lifting purposes.

MATERIAL TYPE	GALVANISED
NOTES	CAN BE USED FOR LIFTING

ADVANTAGES

- Galvanised - prevents premature rust and corrosion
- Good for use with many applications
- Highly durable
- Working load limit is embossed on the shackles so they comply with lifting safety standards