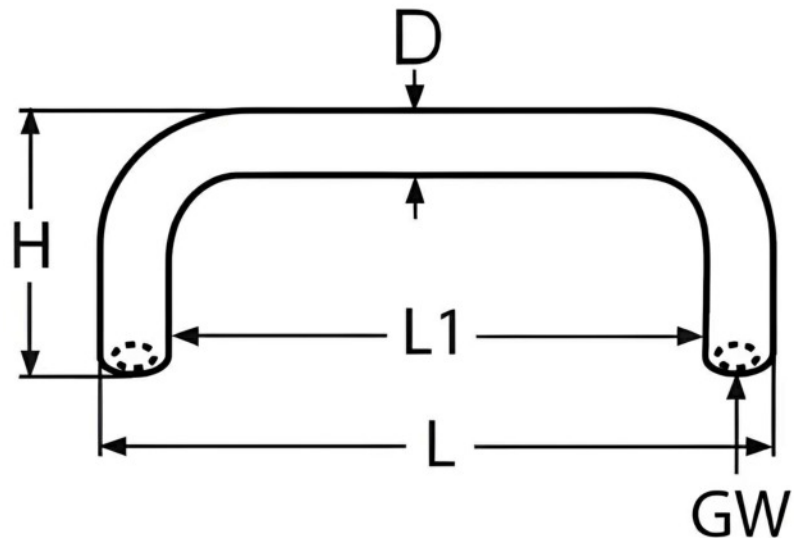


HANDLE INSIDE THREAD



CODE	D	L	L1	H	GW
5290-16-A2	16	142	110	53	M8
5290-19-A2	19	215	175	56	M8

Notes : Dimensions are a guide and may vary slightly. Pls check with us for dimension critical applications
 If Break (BL), Safe working load (SWL) or Working load limit (WLL) are shown:
 This is a guide only. (Do not use for lifting unless it is a certified lifting product)

HANDLE INSIDE THREAD

Our A2 stainless steel inside thread handles are robust and versatile components designed for secure and reliable gripping and lifting applications across a wide range of industries. Constructed from high-quality A2 stainless steel (304 grade), these handles offer excellent corrosion resistance, making them suitable for both indoor and outdoor use where exposure to moisture or harsh conditions may occur. The inside thread feature allows these handles to be easily and securely attached to corresponding bolts, rods, or fittings, providing a strong connection that ensures stability during operation. Available in various sizes and configurations, A2 stainless steel inside thread handles accommodate different thread sizes and pitches, making them adaptable to various machinery, equipment, and construction needs. We offer them in 2 sizes: 142mm, 215mm.

MATERIAL TYPE	A2 STAINLESS
FINISH	POLISHED

ADVANTAGES

- Good for various applications
- Highly durable