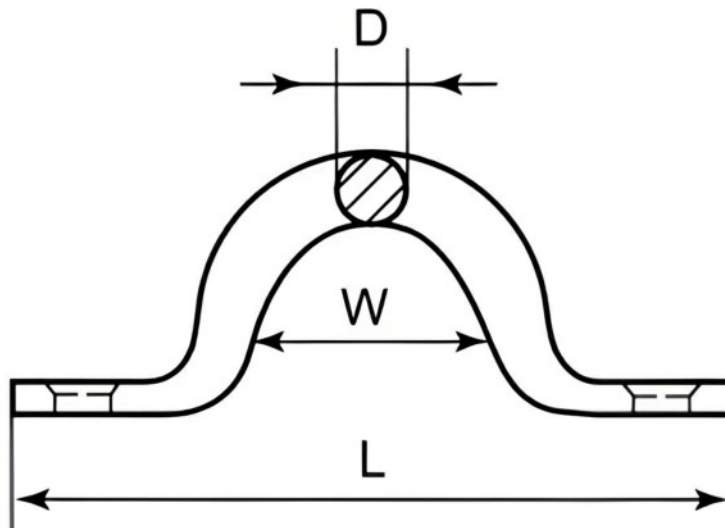


ROUND BODY LACING EYE



SIZE	CODE	WEIGHT (g)	L	W	D
4	SKU7160	4	40	10	4
5	SKU7170	8	50	13	5
6	SKU7180	14	60	15	6
8	SKU7190	21	65	17	8

Notes : Dimensions are a guide and may vary slightly. Pls check with us for dimension critical applications
 If Break (BL), Safe working load (SWL) or Working load limit (WLL) are shown:
 This is a guide only. (Do not use for lifting unless it is a certified lifting product)

ROUND BODY LACING EYE

Round Body Lacing Eyes - sometimes called wire eyestraps - are a useful way of securing items to a surface. The 2 holes enable screw fixing, to create a strong securing point. Sizes available are 4,5 and 6mm. They are manufactured from Stainless steel

MATERIAL TYPE	A2 STAINLESS
FINISH	POLISHED

ADVANTAGES

- Good for various applications
- Highly durable