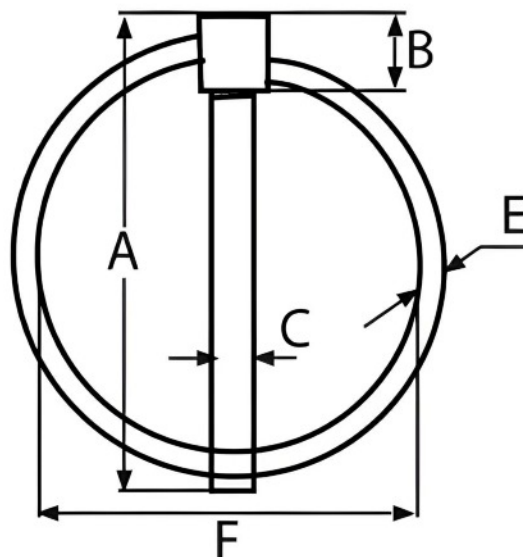


LINCH PIN



CODE	C	A	B	E	F	BOX
5345-44	4.4	49.6	7.5	2.4	39	10
5345-60	6	56.2	8	3.2	44.8	10
5345-74	7.4	56.5	8.4	3.1	44.9	5
5345-106	10.6	56.5	10.7	3.2	43.4	5

Notes : Dimensions are a guide and may vary slightly. Pls check with us for dimension critical applications
 If Break (BL), Safe working load (SWL) or Working load limit (WLL) are shown:
 This is a guide only. (Do not use for lifting unless it is a certified lifting product)

LINCH PIN

Linch pins are manufactured in marine grade stainless making them particularly useful for marine use. Because of the abrasive nature of linch pin uses, stainless also gives benefits for any items used outside, where corrosion free benefits will be felt. These linch pins are designed to retain an item on a shaft - such as a wheel. They can be used on Trailers, diggers, motorcycle stands etc. They have a lock ring mechanism that springs into place, holding the pin in situ.

MATERIAL TYPE	A4 STAINLESS
FINISH	POLISHED

ADVANTAGES

- Good for various applications
- Highly durable