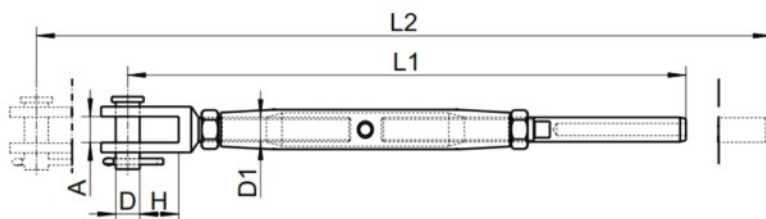


RIGGING SCREW FORK TO SWAGE



| SIZE (d) | WIRE SIZE | CODE | WEIGHT (g) | L1 (min) | L2 (max) | A | D | BREAK (Kg) |
|----------|-----------|---------|------------|----------|----------|----|----|------------|
| M5 | 2 | SKU2355 | 40 | 150 | 200 | 8 | 5 | 800 |
| M5 | 2.5 | SKU2360 | 43 | 150 | 200 | 8 | 5 | 800 |
| M6 | 3 | SKU2400 | 88 | 170 | 233 | 8 | 6 | 1300 |
| M6 | 4 | SKU2420 | 95 | 170 | 233 | 8 | 6 | 1300 |
| M8 | 4 | SKU2440 | 137 | 200 | 276 | 10 | 8 | 2350 |
| M10 | 5 | SKU2480 | 246 | 245 | 322 | 12 | 10 | 3500 |
| M12 | 6 | SKU2520 | 490 | 290 | 395 | 14 | 12 | 5100 |
| M16 | 8 | SKU2530 | 966 | 355 | 499 | 18 | 16 | 8000 |
| M20 | 10 | SKU2540 | 1540 | 400 | 587 | 24 | 20 | 13000 |

Notes : Dimensions are a guide and may vary slightly. Pls check with us for dimension critical applications.
 If Break (BL), Safe working load (SWL) or Working load limit (WLL) are shown:
 This is a guide only. (Do not use for lifting unless it is a certified lifting product)

RIGGING SCREW FORK TO SWAGE

The function of a Rigging Screw is used as a tensioner or adjuster in wire rope assemblies. This could take the form of balustrading, running rigging or catenary wires. You tighten the wire by rotating the barrel of the Rigging Screw. This is useful both at installation and in routine maintenance.

| | |
|---------------|---------------|
| MATERIAL TYPE | 316 STAINLESS |
| FINISH | POLISHED |

ADVANTAGES

- Strong & durable
- Quick and easy installation