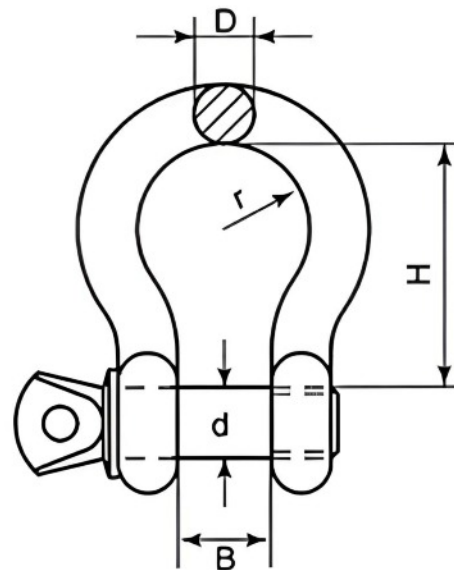


BOW SHACKLE



SIZE	CODE	WEIGHT (g)	D/d	B	H	r	WLL
4	SKU1240	8	4	8	15	15	150
5	SKU1280	18	5	10	17	17	240
6	SKU1320	28	6	12	21	21	340
8	SKU1360	64	8	16	28	28	600
10	SKU1400	113	10	20	35	35	750
12	SKU1440	217	12	24	42	42	1150
16	SKU1460	585	16	32	64	64	1800

Notes : Dimensions are a guide and may vary slightly. Pls check with us for dimension critical applications.

If Break (BL), Safe working load (SWL) or Working load limit (WLL) are shown:
This is a guide only. (Do not use for lifting unless it is a certified lifting product)

BOW SHACKLE

This stainless steel bow shackle is fitted with a standard type screw pin and both the shank and the pin are made from AISI 316 stainless steel. Due to them being A4 stainless they're corrosion resistant.

MATERIAL TYPE	316 STAINLESS
FINISH	POLISHED

ADVANTAGES

- Strong & durable
- Quick and easy connection
- A4 Stainless steel