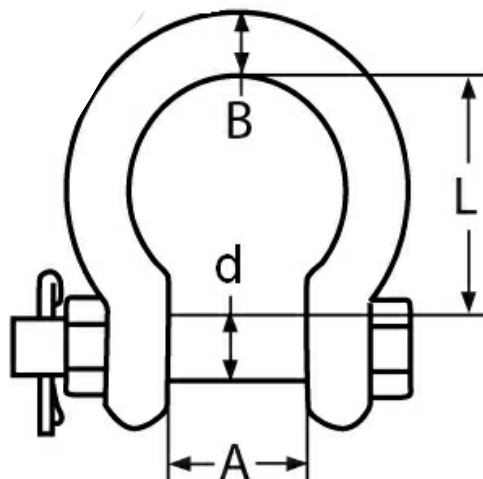


Load Rated Bow shackle (Safety pin)



COMES WITH DECLARATION OF CONFORMITY

SWL Tonnes	Code	Weight (g)	A	L	ID	d	B
0.33	5330-5	23	10	22	16	6.4	5
0.5	5330-6	50	12	29	20	8	6
0.75	5330-8	95	13.5	31	21	9.5	8
1	5330-10	161	17	36	26	11	10
2	5330-12	333	21	48	34	16	12
3	5330-16	670	27	60	42	20	16
4	5330-20	1100	32	71	48	22	20
5	5330-22	1720	36	84	56	26	22

Notes : Dimensions are a guide and may vary slightly. Pls check with us for dimension critical applications.

If Break (BL), Safe working load (SWL) or Working load limit (WLL) are shown:

This is a guide only. (Do not use for lifting unless it is a certified lifting product)

LOAD RATED SAFETY PIN TYPE BOW SHACKLE

This type of Bow shackle is forged and has a larger pin than standard BOW shackles. It has a working load limit allocated to it and comes with a certificate. It is excellent for use in applications where a load limit is required for the product

MATERIAL TYPE	A4 STAINLESS
FINISH	POLISHED

ADVANTAGES

- High corrosion resistance
- Highly durable
- Load rated and forged for high strength