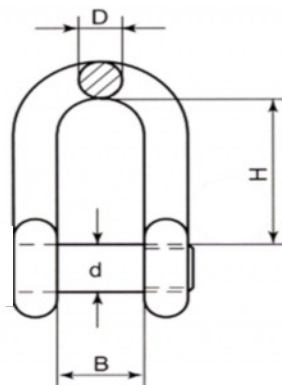
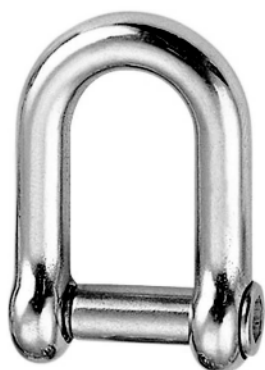


Dee Shackle - Countersunk Socket Pin



Size	Code	Weight (g)	D/d	B	H	WLL kg
5	SKU0900	15.5	5	10	17	240
6	SKU0901	22	6	12	21	340
8	SKU0902	50	8	16	28	600
10	SKU0903	110	10	20	35	750
12	SKU0904	180	12	24	42	1150
14	SKU0905	360	14	28	48	1500
16	SKU0906	445	16	32	56	1700
19	SKU0907	800	19	38	66	2700
22	SKU0908	1270	22	44	74	3300

Notes : Dimensions are a guide and may vary slightly. Pls check with us for dimension critical applications.

If Break (BL), Safe working load (SWL) or Working load limit (WLL) are shown:
This is a guide only. (Do not use for lifting unless it is a certified lifting product)

Dee shackle with flush socket screw - A4 stainless

These are have a hex socket (allen key) type pin fitting and are used where the dee shackle pin head must not snag any items.. Aesthetics are also improved with this.

MATERIAL TYPE	A4 STAINLESS
FINISH	POLISHED