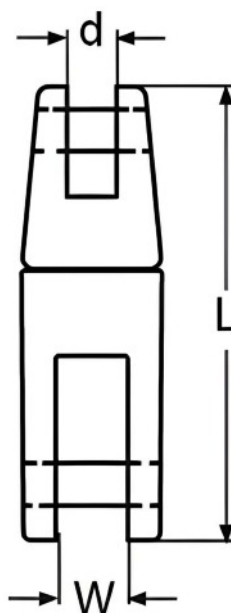


SWIVEL ANCHOR CONNECTOR



BL/Kg	CODE	L	W	FOR CHAIN
4250	SKU93460	84	15	6 TO 8
6750	SKU93462	96	21	10 TO 13

Notes : Dimensions are a guide and may vary slightly. Pls check with us for dimension critical applications.
 If Break (BL), Safe working load (SWL) or Working load limit (WLL) are shown:
 This is a guide only. (Do not use for lifting unless it is a certified lifting product)

SWIVEL ANCHOR CONNECTOR

Swivel anchor connectors made from A4 stainless steel represent a durable and versatile solution for various anchoring and rigging needs. Crafted from high-quality A4 stainless steel, these connectors are designed to provide excellent corrosion resistance, making them suitable for both indoor and outdoor applications, including marine environments. Remove the clevis pins, it swivels and pivots to avoid any snagging.

MATERIAL TYPE	A4 STAINLESS
FINISH	POLISHED

ADVANTAGES

- Strong & durable
- High BL/Kg
- A4 Stainless steel