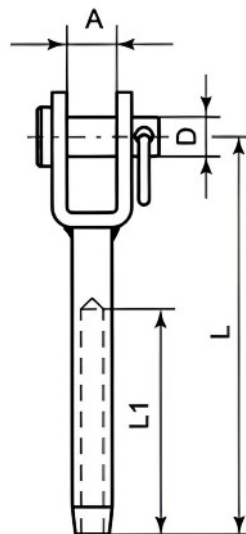


# FORK TERMINAL



SIZE mm (WIRE)	CODE	WEIGHT (g)	A	D	L1	L	BREAK (Kg)
2	SKU2760	15	6	5	24	55	800
3	SKU2800	34	8	5	32	65	1250
4	SKU2840	47	10	6	40	77	1750
5	SKU2880	80	12	9.5	57	88	2350
6	SKU2920	136	14	12.7	63	106	3500
8	SKU2930	200	18	16	83	139	8000
10	SKU2940	260	24	19	89	168	13000
12	SKU2942	350	24	22	120	215	13000
14	SKU2944	600	30	19	140	230	13000
16	SKU2946	900	30	25	160	280	24000

Notes : Dimensions are a guide and may vary slightly. Pls check with us for dimension critical applications.  
 If Break (BL), Safe working load (SWL) or Working load limit (WLL) are shown:  
 This is a guide only. (Do not use for lifting unless it is a certified lifting product)

## FORK TERMINAL

Fork Terminal - designed for swaging onto stainless wire rope. The designated size of the terminal corresponds to the size of wire rope. The clevis pin can be removed by undoing the split cotter ring. This is easily done by hand. This type of terminal must be swaged using a hydraulic hand held or machine type swager.

MATERIAL TYPE	A4 STAINLESS
FINISH	POLISHED

## ADVANTAGES

- Strong & durable
- Easily detachable clevis pin
- A4 Stainless steel