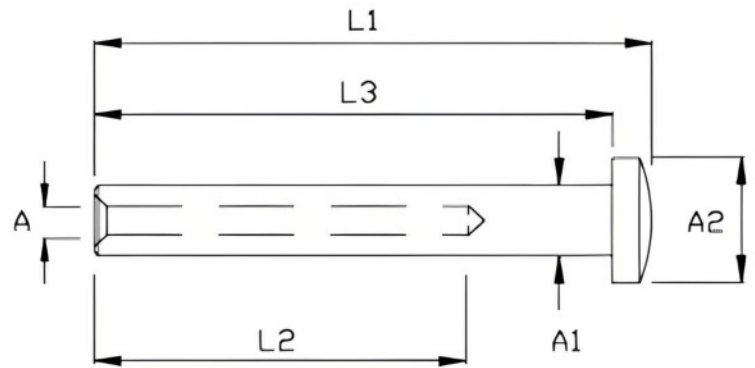


MINI SWAGE DOME HEAD TERMINAL



SIZE mm (WIRE)	CODE	WEIGHT (g)	A1	A2	L1	L2
3	SKU2765	15	5.5	8.7	25	20
4	SKU2767	20	6.5	10.9	30	22
5	SKU2769	26	7.5	12.5	35	25
6	SKU2771	40	9	15	40	30

Notes : Dimensions are a guide and may vary slightly. Pls check with us for dimension critical applications.
 If Break (BL), Safe working load (SWL) or Working load limit (WLL) are shown:
 This is a guide only. (Do not use for lifting unless it is a certified lifting product)

MINI SWAGE DOME HEAD TERMINAL

Terminals are used at the ends of lengths of wire as connectors or end stops. Mini Dome Head Terminals are also part of the architectural range and are an end stop for the wire, often used where the wire passes through metal posts for balustrading. The process used to join the wire and eye terminal is hydraulic swaging or pressing.

MATERIAL TYPE	A4 STAINLESS
FINISH	POLISHED

ADVANTAGES

- Strong & durable
- Corrosion resistant
- A4 Stainless steel