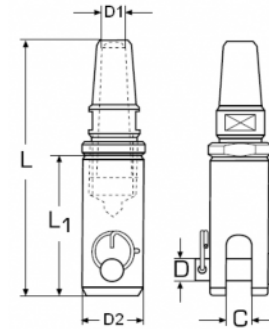


Swageless fork terminal

**BUY
ONLINE**



Available in :

● A4 Stainless

Size mm (wire)	Code	Weight (g)	D1	D	L1	L	C	D2
4	SKU2773	30	4.5	6	45	76	8	18
5	SKU2775	45	6	8	52	98	10	20
6	SKU2777	102	7	10	63	106	11	24

Notes about load limits where shown

SWL or WLL = Safe working load limit (kg) : This is the maximum weight the product should carry.

BL = Break load : This is the maximum weight to break for the product and will vary from batch to batch. You should only use the product at the WLL or 1/4 the break load.

The above are guides for sizing of products and not a recommendation.

Do not use any product for lifting unless drawing is marked suitable for lifting - with this symbol



NB. This drawing and its dimensions to be used as a guide. For dimension critical applications please ask

**STEEL
GEAR**
Stainless steel fasteners & fittings

STEELGEAR.CO.UK
UNIT 9 THESIGER CLOSE
WORTHING
BN11 2RN

www.steelgear.co.uk
info@steelgear.co.uk

Steelgear is a trading name of DARAC LTD

Title:

Swageless
fork terminal

Dimensions in mm

SIZE

A4

DWG NO.
PART NO.

See CODE in above table

REV

1