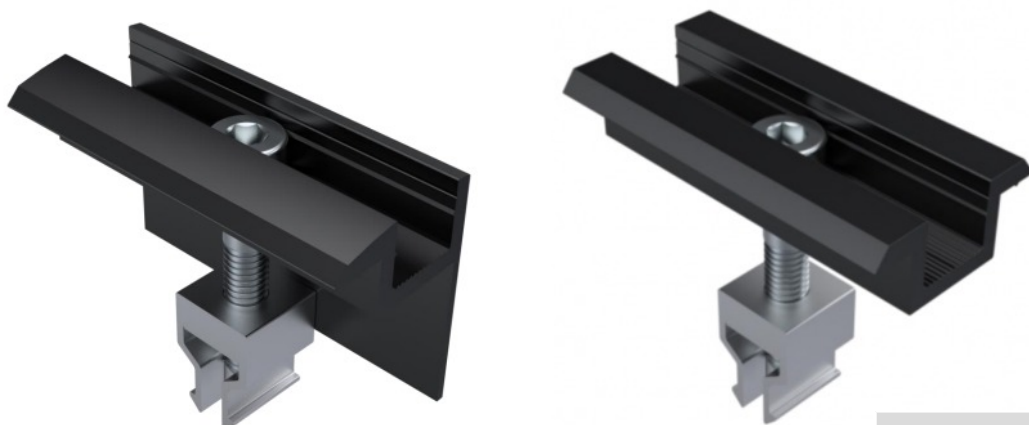


## Adjustable CLAMPS - 30-40mm



Adjustable clamps for solar panel depths of 30 to 40mm. Clip them into the rail and tighten. The clamp adjusts to the depth of the solar panel - anywhere between 30 & 40mm. This pushes in to Steelgear Clip rails anywhere along the length of the rail. It is also compatible with the Schletter Eco and Solo rails.

Part no.	Suits panel depth	Length
<b>SOSTEC-ADJ-30-40-BL</b>	<b>30-40mm</b>	<b>50mm</b>
<b>SOSTMC-ADJ-30-40-BL</b>	<b>30-40mm</b>	<b>50mm</b>

MATERIAL	ALUMINIUM
Quality	AlMgSi0,5 F25
FINISH	Black anodized / 20µm

### Advantages

- ✓ Fast assembly
- ✓ Cost Efficient
- ✓ Universal use  
For all common module frame heights
- ✓ Secure hold
- ✓ Black anodized - for increased corrosion Protection with integrated notching for earthing

### Practises

- ✓ FIXING OF PV MODULES
- ✓ EARTHING OF PV MODULES



Use with Steelgear Clip rail - SO100-CL33-AL

Also compatible with Schletter Solo and Eco rails



## DATA SHEET - ADJUSTABLE CLAMPS - Clip in