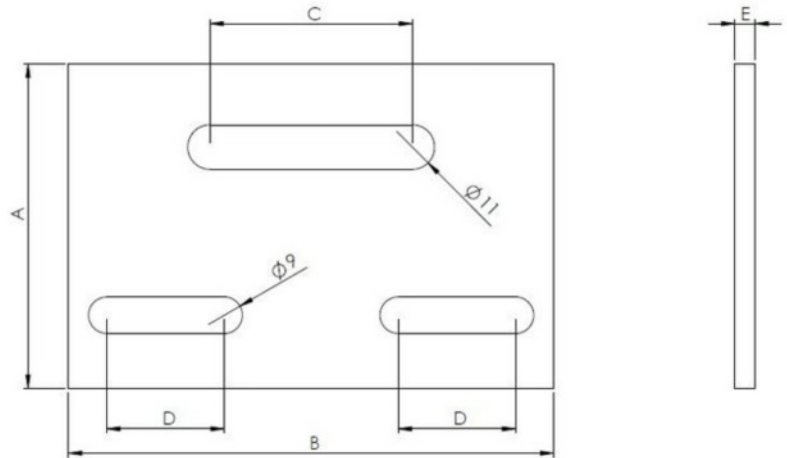


RAIL CONNECTOR PLATE



| Part no. | Weight (g) | A | B | C | D | E |
|----------|------------|------|-------|------|------|-----|
| SORCFP | 115 | 80mm | 120mm | 50mm | 29mm | 5mm |

Solar rail connector :

This plate allows two rails to be connected at a 90 degree angle - ie perpendicular to each other

MATERIAL Aluminium